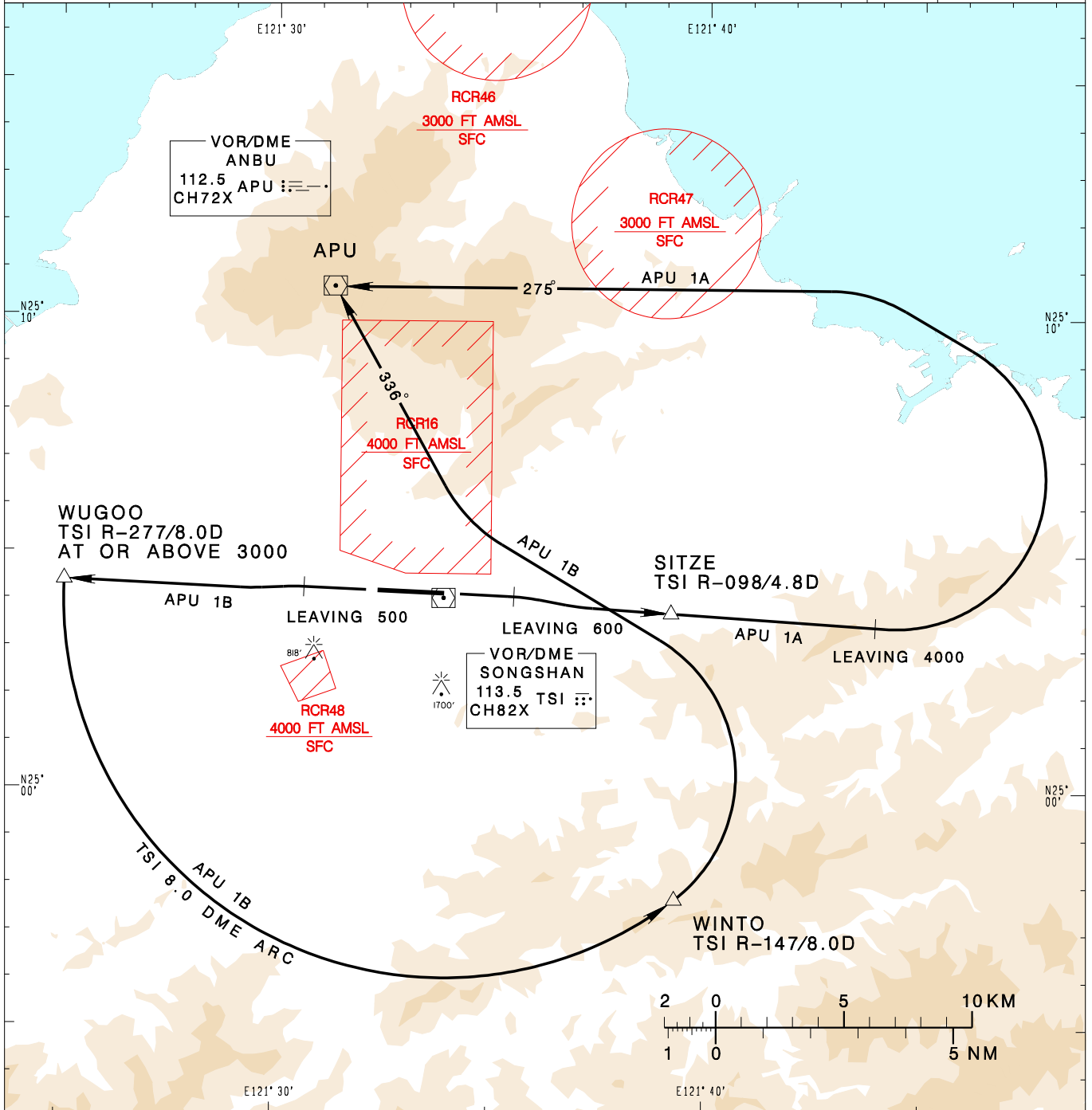


臺北/松山機場
TAIPEI/SONGSHAN AD

RCSS SID
APU 1A(RWY10)
APU 1B(RWY28)

TAIPEI APP 119.7 119.6 125.1	SONGSHAN TWR 118.1	ATIS 127.4 341	VAR 5° W-2022		
Apt Elev: 18'		Trans Level: FL130			Trans Alt: 11,000'
BEARINGS ARE MAGNETIC; DISTANCES ARE NAUTICAL MILES; ELEVATIONS, HEIGHTS IN FEET					



CHANGES: NEW CHART

ANBU ONE ALFA DEPARTURE
Climb on RWY HDG until 600ft, then track TSI R-098 to SITZE, continue TSI R-098 until 4000ft, then turn left to track APU R-095 to APU.

ANBU ONE BRAVO DEPARTURE
Climb on RWY HDG until 500ft, then track TSI R-277 to WUGOO, cross WUGOO at or above 3000ft, then turn left join TSI 8.0 DME arc to WINTO, then turn left to track APU R-156 to APU.

NOTE

- 1.APU 1A:
Minimum climb gradient required: 7.0%(426ft/NM) until 4000ft.
- 2.APU 1B:
Minimum climb gradient required: 7.0%(426ft/NM) until WUGOO.
- 3.ATS surveillance required.
- 4.Caution high terrain around airport.
- 5.A 1700ft-high BLDG at 2.1NM south of THR 28.
- 6.A 818ft-high BLDG at 2 NM SW of THR 10.